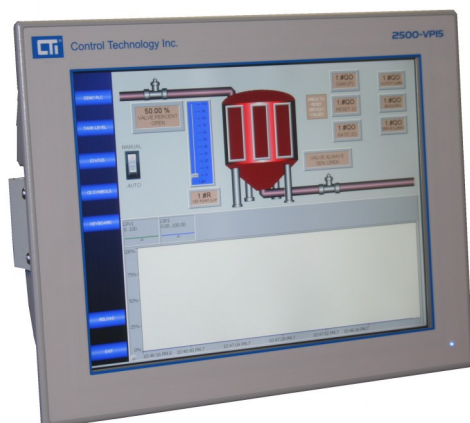


2500 Series[®] HMI Panels

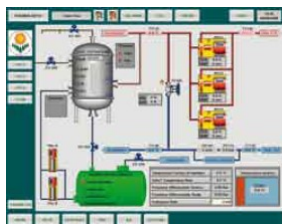
Powered by Zenon



Description

2500 Series[®] HMI Panels are designed to allow easy connection and configuration of HMI applications on CTI 2500 Series[®] Processors. Panels are available in 12" and 15" sizes and are based on the latest Intel Atom processor technology and feature a high-brightness LCD panel for easy readability under industrial conditions. The combination of Windows[®] 7 Embedded and the COPA-DATA Zenon HMI engine offers wizards-based automatic engineering, object-oriented parameterization, and efficient reuse of projects and modules. With Zenon you can develop and configure a wide variety of HMI applications—from operator panels to full SCADA process systems—using a single development tool.

An optimized driver is included for



connecting to CTI 2500 Series[®] PLCs over Ethernet. The panel can also communicate with many other PLC systems, including Siemens S5/S7 and Allen-Bradley.

Food & beverage and pharmaceutical users can benefit from data recording and access regulations in strict accordance with FDA 21 CFR Part 11 – all at the click of a mouse.

When using CTI 2500 Series[®] Processors, program documentation (tag names) can be imported from your PLC Workshop program to make application development easier.

Hardware Specifications

CPU	Intel [®] Atom [™] N270 1.6GHz (VP15) N2600 1.6GHz (VP12)
Memory	2GB DDR2 SDRAM
Network	2 x Realtek RTL8111B 10/100/1000Base-T
Storage	CompactFlash Type II Socket with 16GB
LCD Display	15" TFT LCD (VP15) 12" TFT LCD (VP12)
Resolution	1024 x 768, XGA
Backlight Life	50,000 hours
Luminance	500 cd/m ²
Touch Screen	5-wire, resistive
Other Ports	PS2 KB.Mouse (VP15) USB 2.0, 2 ports (VP15) USB 2.0, 4 ports (VP12) Serial (4 ports)
Power	24VDC +/-10%, 2A
Environmental	Operating temp 0 to +50C (VP15) 0 to +55C (VP12) Storage temp -20 to +70C Humidity 10% - 95% noncondensing Vibration 1Grms Ingress NEMA4, IP65
Mechanical	Dimensions 390 x 52.3 x 310mm (VP15) 15.4 x 2.06 x 12.2 in (VP15) 326 x 44 x 259mm (VP12) 12.8 x 1.73 x 10.2 in (VP12) Weight 4.4kg (9.7 lb)
Shipping	Dimensions 500 x 200 x 460mm 20" x 8" x 18"
Weight	7kg (15 lb)
Approvals	UL, UL-C, CE Class 1 Div 2 (pending)
Warranty	2 years
Software Specifications	
Runtime System	Maximum application size is limited only by memory. No individual limits on screens, variables, or objects.
Tag count	256-2048 (depending on license purchased, larger tag count possible on request)
Tag definition	1 tag = 1 memory location read from PLC



2500 Series[®] HMI Panels

Powered by Zenon

Application Development System

Computer requirements

Windows[®] XP, Vista, Windows[®] 7, Windows[®] 8

Maintenance and Support Options

Standard warranty included with 2500 Series[®] HMI Panels consists of 2yr warranty on hardware and 60 days warranty/upgrades on software. BASIC SUPPORT is included at no additional charge.

BASIC SUPPORT

- Free lifetime support by email is standard on all HMI panels. All BASIC SUPPORT requests are processed in the order they are received.

PREMIUM ANNUAL SUPPORT

- Includes priority telephone support with response in 1 business day

EXTENDED HARDWARE WARRANTY

- Available in 1yr, 2yr, 3yr terms
- Must be purchased within 60 days of the ship date of the HMI panel
- Extends your hardware warranty for 1, 2, or 3 years
- Includes advanced replacement for warranty hardware failures (2 business days), UPS ground shipment (United States only)

ANNUAL RUNTIME SOFTWARE MAINTENANCE

- Includes 1-year free upgrades on the Zenon runtime software installed on the HMI panel
- Must be purchased within 60 days of the ship date of the HMI panel

ANNUAL DEVELOPMENT SOFTWARE MAINTENANCE

- Includes 1-year free upgrades on the Zenon Application Development Software for Windows[®]
Must be purchased within 60 days of the ship date of the HMI panel

2500 Series[®] HMI Panels

Powered by Zenon

Zenon HMI Engine Features

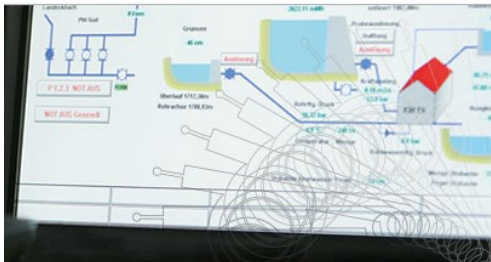
Zenon is a full-featured HMI and SCADA system which allows development of applications from simple operator panels to complex server-based SCADA with redundancy—all using a single development tool.

Reduce the time pressure on your projects by relying on intelligent wizards and on software that is geared towards usability. Give your

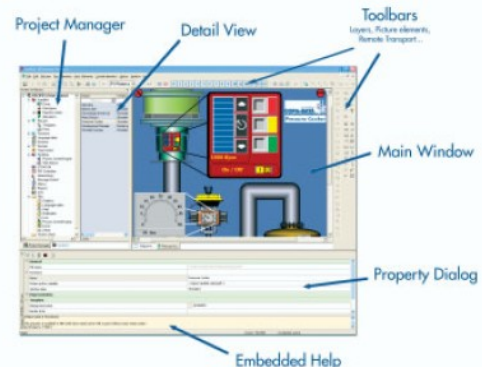


engineers a HMI/SCADA system that allows them to solve even the most challenging tasks in a secure, fast and simple way – Zenon. With just one software package, you will benefit from important functions for successful HMI/SCADA projects:

- Multi-project editor—open and work on multiple projects at once, freely sharing objects between projects
- Optimized driver for CTI 2500 Series[®] supports all memory types and data types
- Optional Extended Trend and Historian (Starter Edition) which allows historian files to be saved in multiple formats
- Easy, frame-based screen design allows quick changes to one, many or all screens in the project
- Powerful function editor replaces “scripts” in conventional HMIs to provide high level control of the application
- Make changes to the application while running
- Chronological Event List (CEL) object for tracking and recording events in the system
- Alarm Manager List (AML) object for displaying and managing alarms



- Full User Administration for setting individual user rights down to the object level
- Power Recipe Manager for batch-based processes
- Ability to connect to the HMI Panel from any PC using a web browser (option)
- Automatic Engineering—Smart wizards perform routine tasks and relieves the workload on your engineers. Free your mind for efficient solutions.
- Object-oriented Parameterization—No more tedious programming work. Parameterize objects easily and efficiently with a mouse click and reuse them again and again.



- Intelligent Integration—One central data source for a better overview, less errors and reduced costs – open to any connection.
- Efficient Reuse—Why start over every time? Reuse projects and modules with Zenon’s smart import and export functions.
- Elegant Networking—Create fast Zenon networks – even with complex structures – with only a few mouse clicks.
- Local and worldwide—You can choose the languages you want to use for Engineering and in the Runtime. You can then simply switch between them at any time.

2500 Series[®] HMI Panels

Powered by Zenon

Ordering information

HMI Panel

2500-VP15-N4-W7R	15" HMI Panel, Windows [®] 7 Embedded, NEMA4, 256 tag
2500-VP12-N4-W7R	12" HMI Panel, Windows [®] 7 Embedded, NEMA4, 256 tag
2500-Z256-512	Runtime 256-tag to 512-tag upgrade
2500-Z256-1024	Runtime 256-tag to 1024-tag upgrade
2500-Z256-2048	Runtime 256-tag to 2048-tag upgrade
2500-Z512-1024	Runtime 512-tag to 1024-tag upgrade
2500-Z512-2048	Runtime 512-tag to 2048-tag upgrade
2500-Z1024-2048	Runtime 1024-tag to 2048-tag upgrade

Runtime Software Options

2500-Z-ETAS	Extended Trend and Historian (Starter Edition)
2500-Z-WSP	Web Server Pro Light

Development Software

2500-Z2K-DEV-USB	Zenon Application Development Software (Editor), maximum 2048 tags, USB Dongle License Key
------------------	--

Accessories

2500-VP-PS	65W 110/220 VAC Power Supply
2500-VP-PSC	NOTE: any 24V +/- 10%, 2A power supply can be used 3-pin power supply connector
2500-VP-VESA-ADPT-KIT	VESA mount bracket kit

Maintenance and Support

2500-VP15-ASC	Premium Annual Support
2500-VP15-EXW1	Extended Hardware Warranty, 1-year (total warranty 3 years)
2500-VP15-EXW2	Extended Hardware Warranty, 2-years (total warranty 4 years)
2500-VP15-EXW3	Extended Hardware Warranty, 3-years (total warranty 5 years)
2500-Z256-RT-AMP	Annual Runtime Software Maintenance, 256 tag
2500-Z512-RT-AMP	Annual Runtime Software Maintenance, 512 tag
2500-Z1K-RT-AMP	Annual Runtime Software Maintenance, 1K tag
2500-Z2K-RT-AMP	Annual Runtime Software Maintenance, 2K tag
2500-Z2K-DEV-AMP	Annual Development Software Maintenance, 2K tag

NOTE: when purchasing a Runtime Tag Upgrade, you must supply the serial number of your previous license.