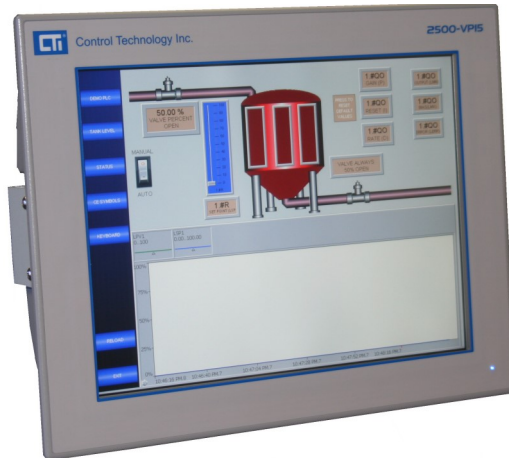


2500 Series® Flat-Panel PCs with Windows® 7 Embedded



Description

2500 Series® Flat-Panel PCs make a good platform for integrating your own Windows® 7 based HMI applications into 2500 Series® Systems. The panels are available in 15" and 12" sizes and are based on the latest Intel Atom processor technology and feature a high-brightness LCD panel for easy readability under industrial conditions. The Windows® 7 Embedded operating system allows installation and operation of any Windows® 7 compatible application.

Hardware Specifications

CPU	Intel® Atom™ N270 1.6GHz (VP15) N2600 1.6GHz (VP12)
Memory	2GB DDR2 SDRAM
Network	2 x Realtek RTL8111B 10/100/1000Base-T
Storage	CompactFlash Type II Socket with 16GB
LCD Display	15" TFT LCD (VP15) 12" TFT LCD (VP12)
Resolution	1024 x 768, XGA
Backlight Life	50,000 hours
Luminance	500 cd/m ²
Touch Screen	5-wire, resistive
Other Ports	PS2 KB.Mouse (VP15) USB 2.0 (2 ports—VP15) USB 2.0 (4 ports—VP12) Serial (4 ports)
Power	24VDC +/-10%, 2A
Environmental	
Operating temp	0 to +50C (VP15) 0 to +55C (VP12)
Storage temp	-20 to +70C
Humidity	10% - 95% noncondensing
Vibration	1Grms
Ingress	NEMA4, IP65
Mechanical	
Dimensions	390 x 52.3 x 310mm (VP15) 15.4 x 2.06 x 12.2 in (VP15) 326 x 44 x 259mm (VP12) 12.8 x 1.73 x 10.2 in (VP12)
Weight	4.4kg (9.7 lb)
Shipping	
Dimensions	500 x 200 x 460mm 20 x 8 x 18 in
Weight	7kg (15 lb)
Approvals	UL, UL-C, CE Class 1 Div 2 (pending)
Warranty	2 years

Software Specifications

Operating System
Windows® 7 Embedded



Control Technology Inc.

5734 Middlebrook Pike, Knoxville, TN 37921-5962
Phone: +1.865.584.0440 Fax: +1.865.584.5720
www.controltechnology.com

2500 Series[®] Flat-Panel PCs with Windows[®] 7 Embedded

Maintenance and Support Options

Standard warranty included with 2500 Series[®] HMI Panels consists of 2yr warranty on hardware and 60 days warranty/upgrades on software. BASIC SUPPORT is included at no additional charge.

BASIC SUPPORT

- Free lifetime support by email is standard on all HMI panels. All BASIC SUPPORT requests are processed in the order they are received.

EXTENDED HARDWARE WARRANTY

- Available in 1yr, 2yr, 3yr terms
- Must be purchased within 60 days of the ship date of the HMI panel
- Extends your hardware warranty for 1, 2, or 3 years
- Includes advanced replacement for warranty hardware failures (2 business days), UPS ground shipment (United States only)

Ordering information

HMI Panel

2500-VP15-N4-W7	15" Flat-Panel PC, Windows [®] 7 Embedded, NEMA4
2500-VP12-N4-W7	12" Flat-Panel PC, Windows [®] 7 Embedded, NEMA4

Accessories

2500-VP-PS	65W 110/220 VAC Power Supply
2500-VP-PSC	NOTE: any 24V +/- 10%, 2A power supply can be used
2500-VP-VESA-ADPT-KIT	3-pin power supply connector
	VESA mount bracket kit

Maintenance and Support

2500-VP15-EXW1	Extended Hardware Warranty, 1-year (total warranty 3 years)
2500-VP15-EXW2	Extended Hardware Warranty, 2-years (total warranty 4 years)
2500-VP15-EXW3	Extended Hardware Warranty, 3-years (total warranty 5 years)