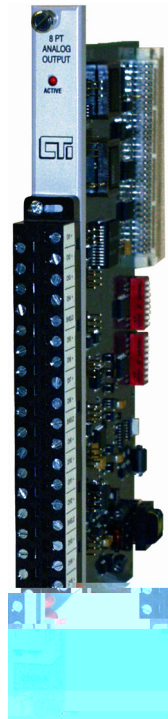


## 2560-A 8-Channel Isolated Analog Output Module



### Description

The 2560-A is a high-speed 8-channel isolated analog output module designed to be compatible with the CTI 2500 Series and Simatic® 505 I/O base. The 2560-A translates a digital word from the controller into equivalent analog outputs.

### Features

- 1500V channel-to-channel isolation
- 1500V channel-to-PLC backplane isolation
- Fast 0.25 mSec update time per channel
- Voltage and current outputs available simultaneously
- Bipolar or Unipolar outputs per channel
- Individual D/A converter for each output channel

### Specifications

**Output Channels:** 8 isolated

**Response Time:** 2 mSec total module

**Output Range:**

**Unipolar:** 0 to +5.12 VDC

0 to +10.24 VDC

0 to 20 mA

**Bipolar:** -5.12 to +5.12 VDC

-10.24 to +10.24 VDC

-20 to +20 mA

**Resolution:** 12 bits

0-20 mA range = 5  $\mu$ A/step

0-5 VDC range = 1.25 mV/step

0-10 VDC range = 2.5 mV/step

-5 to +5 VDC range = 2.5 mV/step

-10 to +10 VDC range = 5.0 mV/step

-20 to +20 mA range = 10  $\mu$ A/step

**Isolation:** 1500 VDC channel-to-channel

1500 VDC channel-to-PLC

Capacitance Drive: 0.01 microfarads

**Load Resistance:**

**Voltage:** 1K $\Omega$  minimum, no maximum

Current: 0 $\Omega$  to 1K $\Omega$  max. @ 24 VDC

or up to 2000 $\Omega$  max. with an external

10V power supply present in circuit

**Voltage Accuracy:**

0.1% of full scale from 0° to 60°C over total load range

**Current Accuracy:**

0.5% of full scale from 0° to 60°C over total load range

**User Supply:**

20 to 28 VDC @ 0.5 Amps (maximum ripple of 0.4 V) NOTE: Maximum load resistance for current output drops to 600 $\Omega$  @ 20 VDC user supply

**Connector:** Removable

**Wire Gauge:** 14 to 22 AWG

**Backplane Power:** 1.7 Watts

**Module Size:** Single-wide

**Operating Temperature:** 0° to 60°C (32° to 140°F)

**Storage Temperature:** -40° to 85°C (-40° to 185°F)

**Humidity, Relative:** 5% to 95% (non-condensing)

**Agency Approvals:** UL, UL for Canada, FM (Class 1, Div 2), CE

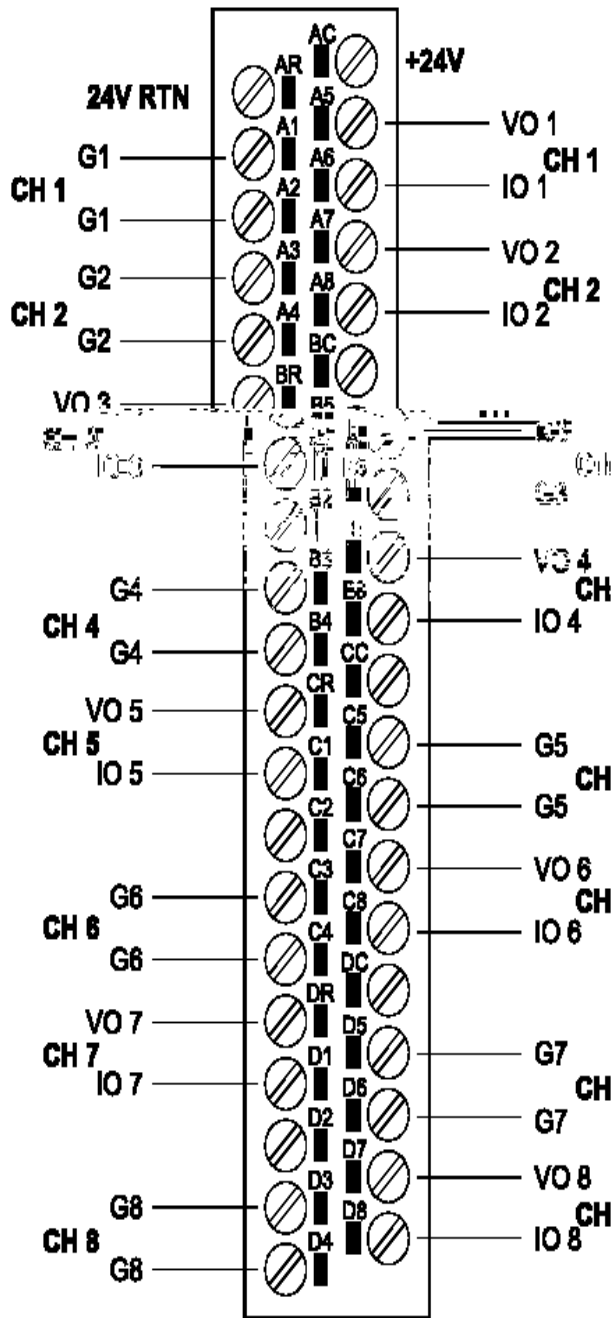
**Shipping Weight:** 1.5 lbs. (0.68 Kg)



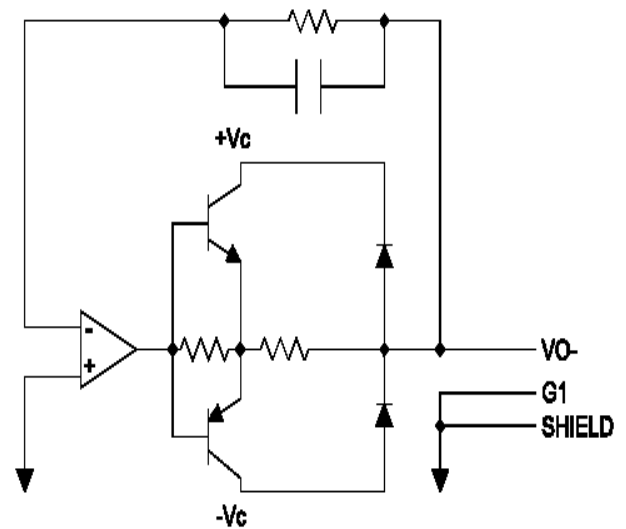
Control Technology Inc.

5734 Middlebrook Pike, Knoxville, TN 37921-5962

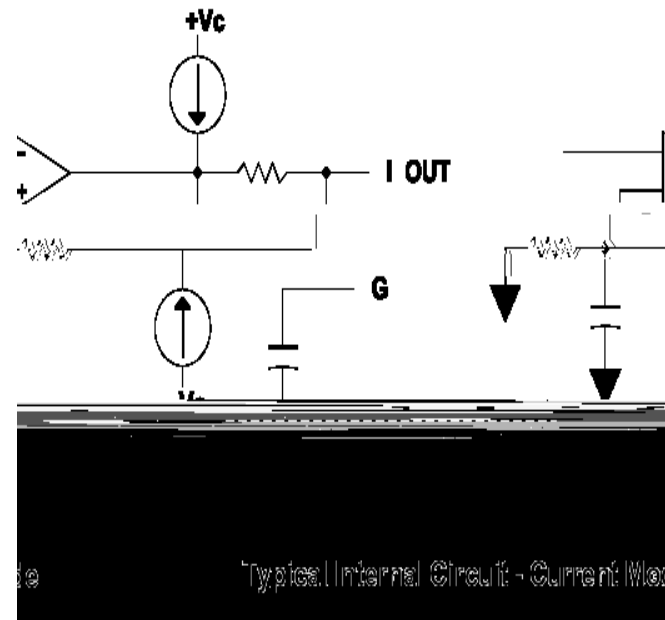
Phone: 865/584-0440 Fax: 865/584-5720 www.controltechnology.com



2560-A Connector



Typical Internal Circuit - Voltage Mode



Typical Internal Circuit - Current Mode

**NOTE:** The front connector on the module contains a G terminal which may be used for the shield wire if the installation is in a noise free environment. If the installation is in an extremely noisy environment CTI strongly recommends that the shield wires be terminated to the PLC chassis ground.